



## KCS RAIL CROSSINGS BATON ROUGE PUBLIC MEETING



**KCS RAIL CROSSINGS BATON ROUGE  
FROM GAYOSA STREET TO LOUISE STREET  
STATE PROJECT NO. H.012449  
FEDERAL AID PROJECT NO. H012449  
EAST BATON ROUGE PARISH, LOUISIANA**

**McKowen Missionary Baptist Church  
1255 Louise St.  
Baton Rouge, LA 70802  
May 25, 2021  
5:30 – 7:30 p.m.**

Thank you for attending this Public Meeting for the proposed KCS Rail Crossings Baton Rouge project. In this handout you will find information about the proposed project including a preliminary project description, a location map, and a description of proposed work at each crossing location. Also included is a comment form.

This handout and other project information will be available on the DOTD website at [http://wwwapps.dotd.la.gov/administration/public\\_info/projects/](http://wwwapps.dotd.la.gov/administration/public_info/projects/) in the project folder.

Please provide your name and address at the sign in station.

There are many ways to provide your comment on this project to DOTD. The last page of this handout is a comment form that you may write your comment on and leave with a DOTD staff member, or mail to the DOTD address provided on the form. You may also leave a recorded oral comment here at the meeting. **Please note that comments mailed after this meeting must be postmarked no later than June 27, 2021 to be included as part of the meeting transcript.**

We hope you will take advantage of this opportunity to provide input on the proposed KCS Rail Crossings project. Thank you for attending this meeting and for providing input.

**Thank you to the McKowen Missionary Baptist Church for allowing us to use their meeting facility.**

### **PRELIMINARY PROJECT DESCRIPTION**

The Louisiana Department of Transportation and Development (LADOTD), City of Baton Rouge (BR) and Kansas City Southern Railroad (KCS), Federal Highway Administration (FHWA), and Federal Rail Administration (FRA) are proposing a project that includes the maintenance and rehabilitation of ten (10) and closure of five (5) railroad crossings along the KCS railroad in the City of Baton Rouge, East Baton Rouge Parish. Proposed activities for each of the crossings are described in the table below.

The crossings that are proposed to be closed will be complete closures. The sidewalks at these crossings would be removed; however, sidewalks will be connected over nearby crossings, usually where sidewalks come up to the railroad right-of-way and end. Detours will be required for the maintenance and rehabilitation during the in-roadway crossing work. The detours will be coordinated with the City of Baton Rouge at the time of construction. Detours will not be required for the signal work.

The maintenance and rehabilitation work will be completed within existing KCS, City of Baton Rouge, or LADOTD right-of-ways. Additional right-of-way may be required for street connectivity between Smith and Louise Street. Connecting roads will utilize KCS right of way where feasible and reasonable. No relocations are anticipated. No impacts to wetlands are anticipated. It is anticipated that the project will be processed as a Categorical Exclusion.

<b>Crossing</b>	<b>Preliminary Description of Proposed Work</b>
Gayosa Street Crossing	Close roadway crossing railroad. Remove 32 foot timber railroad crossing surface. Work with city to ensure connectivity remains. Remove asphalt road approaches. Reslope ditch line to drain, and reseed grass on affected areas. Install metal guard rail with two retro-reflective object and end of road markers for each travel lane.
North Street Crossing	Install two crossing gates/arms in front of existing signal cantilevers. Upgrade existing lights to LEDs. Crossing surface and approaches will be evaluated to determine if the surface needs to be replaced and the vertical curve on the roadway approaches need to be adjusted.
Main Street Crossing	Install two crossing gates/arms in front of existing signal cantilevers. Install signal mast with flashers and crossing gates on N. 15th Street on northwest corner of intersection with Main Street. Upgrade existing lights to LEDs. Crossing surface and approaches will be evaluated to determine if the surface needs to be replaced and the vertical curve on the roadway approaches need to be adjusted.
Laurel Street Crossing	Construct two (2) 8 inch x 12 inch x 60 foot concrete medians on both roadway approaches. Paint curbs with retro-reflective paint. Install four delineators one on each end of the median curbs. Install retro-reflective stop bars, railroad pavement markings and advance warning signs. Install two crossing gates/arms on existing signals and upgrade existing lights to LEDs. Crossing surface and approaches will be evaluated to determine if the surface needs to be replaced and the vertical curve on the roadway approaches need to be adjusted.
Florida Boulevard Crossing	Construct one (1) 8 inch x 12 inch x 70 foot concrete median on east side roadway approach and one (1) 8 inch x 12 inch x 60 foot concrete median on west side roadway approach. Paint curbs with retro-reflective paint. Install four delineators one on each end of the median curbs. Install retro-reflective stop bars, railroad pavement markings and advance warning signs. Install two crossing gates/arms on existing signals and upgrade existing lights to LEDs.
Convention Street Crossing	Construct one (1) 8 inch x 12 inch x 60 foot concrete median on east side roadway approach and one (1) 8 inch x 12 inch x 100 foot concrete median on west side roadway approach. Paint curbs with retro-reflective paint. Install four delineators one on each end of the median curbs. Install retro-reflective stop bars, railroad pavement markings and advance warning signs. Install two crossing gates/arms on existing signals and upgrade existing lights to LED's. Crossing surface and approaches will be evaluated to determine if the surface needs to be replaced and the vertical curve on the roadway approaches need to be adjusted.
Wisteria Street Crossing	Install flashing lights and crossing gates/arms.
South Boulevard Crossing	Construct one (1) 8 inch x 12 inch x 100 foot concrete median on east side roadway approach and one (1) 8 inch x 12 inch x 80 foot concrete median on west side of roadway approach. Paint curbs with retro-reflective paint. Install four delineators (one on each end of the median curbs). Install retro-reflective stop bars, railroad pavement markings and advance warning signs. Install new flashers and crossing gates/arms. Crossing surface

	and approaches will be evaluated to determine if the surface needs to be replaced and the vertical curve on the roadway approaches need to be adjusted.
Myrtle Walk Street Crossing	Construct one (1) 8 inch x 12 inch x 60 foot concrete median on east side roadway approach and one (1) 8 inch x 12 inch x 100 foot concrete median on west side of roadway approach. Paint curbs with retro-reflective paint. Install four delineators (one on each end of the median curbs). Install retro-reflective stop bars, railroad pavement markings and advance warning signs. Install new flashers and crossing gates/arms. Crossing surface and approaches will be evaluated to determine if the surface needs to be replaced and the vertical curve on the roadway approaches need to be adjusted.
Julia Street Crossing	Close roadway crossing railroad. Remove 32 foot timber railroad crossing surface. Remove asphalt road approaches to railroad right of way or at least 25 feet from near rail. Re-slope ditch line to drain, and reseed grass on affected areas. Install metal guard rail with two retro-reflective object and end of road markers for each travel lane.
Terrace Avenue Crossing	Extend crossing surface to the south to connect sidewalks. Install necessary concrete and truncated domes to connect existing sidewalks. Adjust vertical curve on the roadway approaches. Construct one (1) 8 inch x 12 inch x 60 foot concrete median on east side roadway approach and one (1) 8 inch x 12 inch x 60 foot concrete median on west side roadway approach. Paint curbs with retro-reflective paint. Install four delineators one on each end of the median curbs. Install retro-reflective stop bars, railroad pavement markings and advance warning signs. Install new flashers and crossing gates/arms.
Smith Street Crossing	Close roadway crossing railroad. Remove 36 foot timber railroad crossing surface. Remove asphalt road approaches to 20 feet from near rail. Re-slope ditch line to drain, and reseed grass on affected areas. Install metal guard rail with two retro-reflective object and end of road markers for each travel lane.
Orange Street Crossing	Close roadway crossing railroad. Build road which will maintain connectivity on both sides of Orange Street. Remove 30 foot timber railroad crossing surface. Remove asphalt road approaches to 20 feet from near rail. Re-slope ditch line to drain, and reseed grass on affected areas. Install metal guard rail with two retro-reflective object and end of road markers for each travel lane. <u>DOTD is working with the City of Baton Rouge to maintain connectivity on the east side of Orange Street. The crossing WILL NOT be closed if a feasible connecting road cannot be provided.</u>
Apple Street Crossing	Close roadway crossing railroad. Build connector roads on both sides of tracks to maintain connectivity. Remove 31 foot timber railroad crossing surface. Remove asphalt road approaches to 20 feet from near rail. Re-slope ditch line to drain, and reseed grass on affected areas. Install metal guard rail with two retro-reflective object and end of road markers for each travel lane.
Louise Street Crossing	Extend timber crossing surface to connect sidewalks. Install necessary concrete and truncated domes to connect existing sidewalks. Install retro-reflective stop bars, railroad pavement markings and advance warning signs. Install new flashers and crossing gates/arms. Crossing surface and approaches will be evaluated to determine if the surface needs to be replaced and the vertical curve on the roadway approaches need to be adjusted.

## **PURPOSE AND NEED**

The purpose of this project is to improve safety along the KCS railroad corridor in Baton Rouge by eliminating five (5) crossings and conducting maintenance and rehabilitation on ten (10) crossings.

## **RIGHT OF WAY ACQUISITION INFORMATION**

A DOTD Right of Way representative is present at the meeting tonight to answer your questions.

The DOTD Brochure explaining the Acquisition of Right of Way is also available. If you have property affected by this project, we suggest you read the brochure carefully. If you have any questions regarding your individual situation, consult with the Right of Way representative when they meet with you or contact Kiawasha White, Right of Way Region 4 Manager at 225-242-4593.

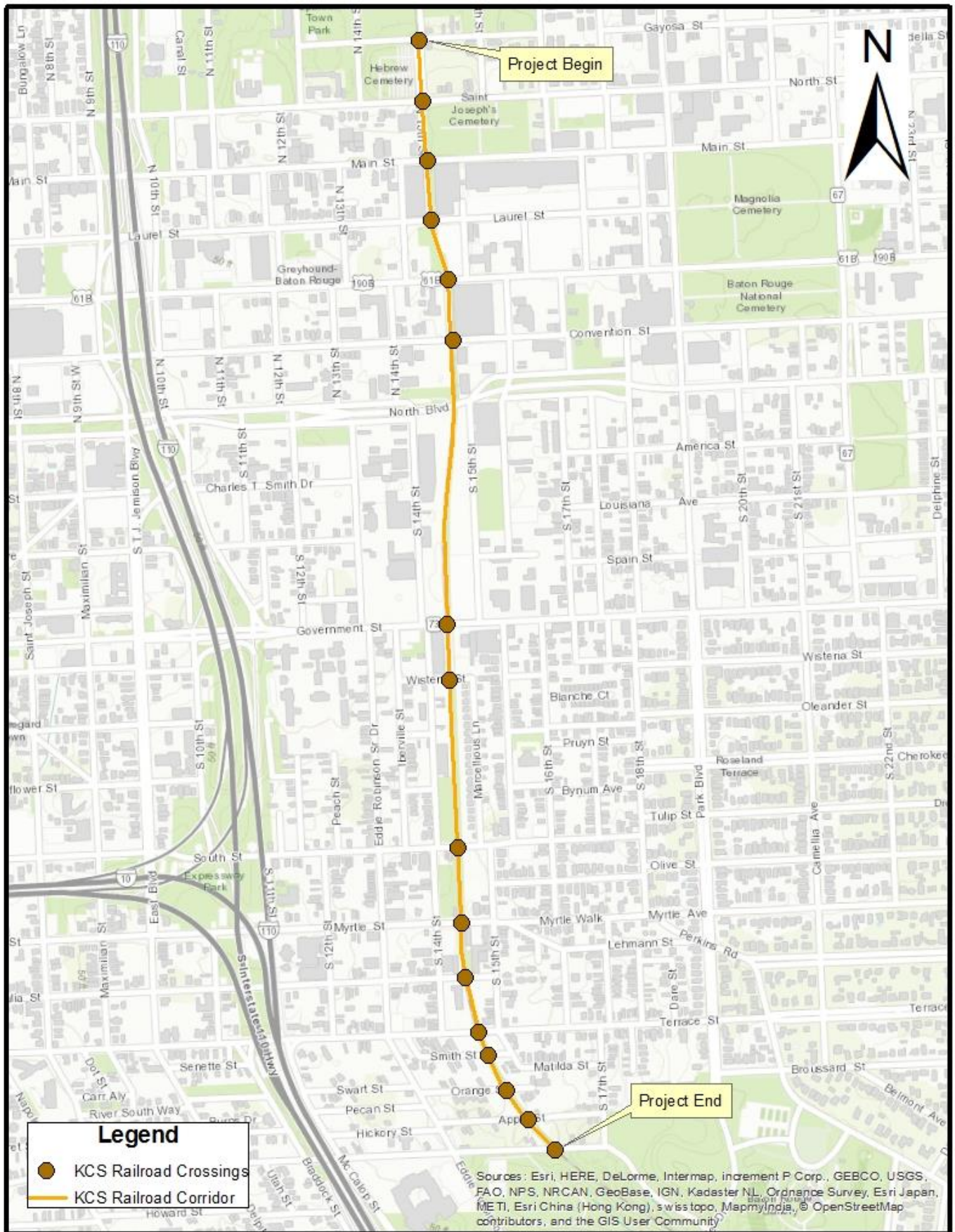
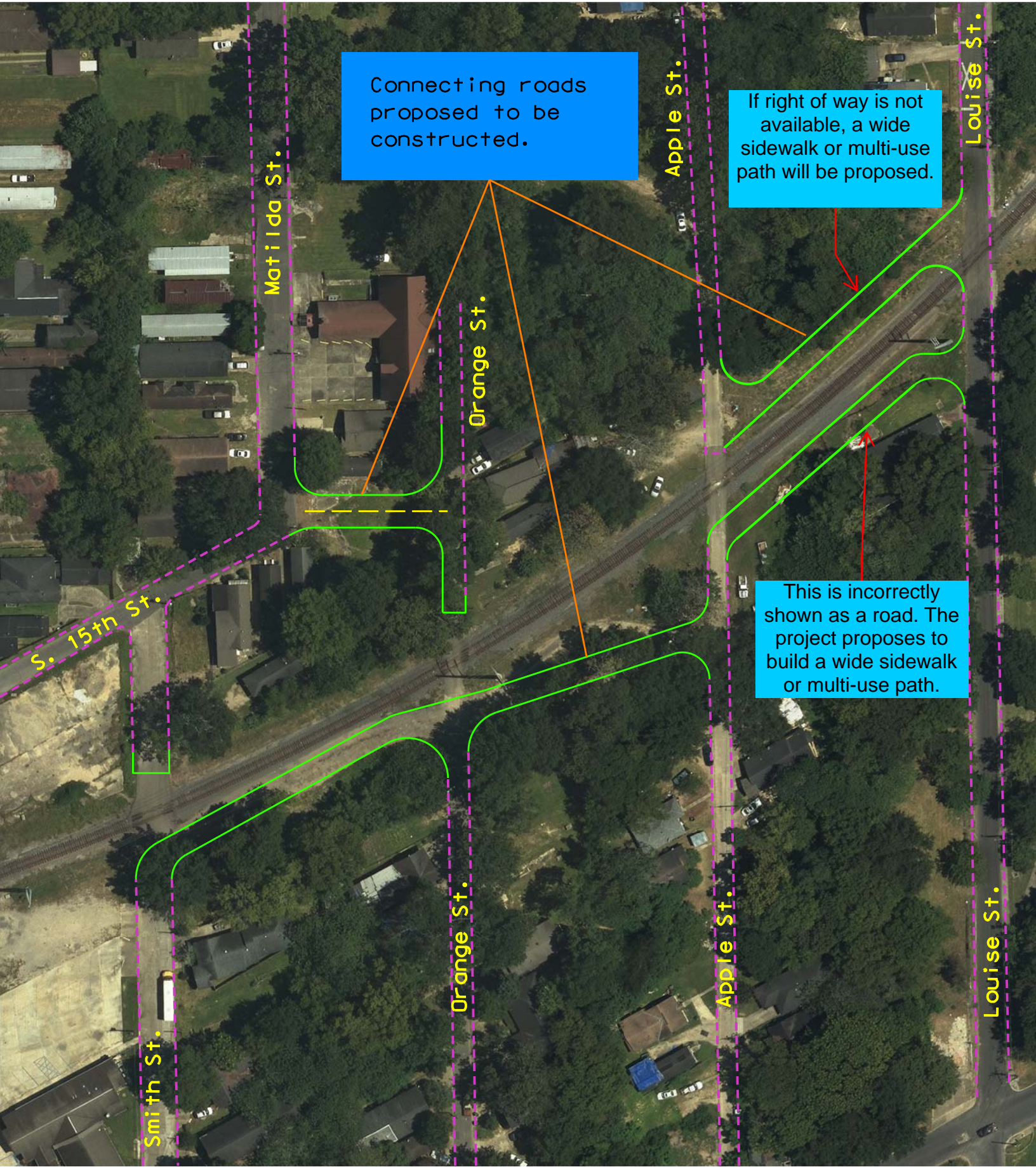


Figure 1: Proposed Project Area (Government St. Crossing is not included in this project)



Connecting roads proposed to be constructed.

If right of way is not available, a wide sidewalk or multi-use path will be proposed.

This is incorrectly shown as a road. The project proposes to build a wide sidewalk or multi-use path.

Smith St.

Matilda St.

Orange St.

Orange St.

Apple St.

Apple St.

Louise St.

Louise St.

S. 15th St.



**KCS RAIL CROSSINGS BATON ROUGE  
PUBLIC MEETING  
May 25, 2021**



**KCS RAIL CROSSINGS BATON ROUGE  
FROM GAYOSA STREET TO LOUISE STREET  
PROJECT NO. H.012449  
EAST BATON ROUGE PARISH, LOUISIANA**

Please provide your comments below regarding the project and the issues that the Project Team should evaluate for this study. When complete, please return this form to **Comment Table**. To mail, fold the form in half with the address showing on the outside and seal. Comments received tonight or post marked by **June 27, 2021** will become part of the transcript of this meeting.

---

---

---

---

---

---

---

---

---

---

---

---

---

---

---

---

---

---

---

---

---

---

---

---

NAME: \_\_\_\_\_

ADDRESS: \_\_\_\_\_

\_\_\_\_\_

Louisiana Department of Transportation and  
Development  
Environmental Engineering Administrator, Sec. 28  
P.O. Box 94245  
Baton Rouge, LA 70804-9245

PLACE  
STAMP  
HERE

FOLD  
HERE